

# Oil and VOC measurement

## VH-350

In reduced size cabinet, this unit is ideal for measurement of oil and VOCs.

The measured values can be indicated:  
in ppm for VOCs  
In mg/m<sup>3</sup> for oil mist.

An evaporator heater is used to measure the oil mist.

The high sensitivity of the sensor allows measured values lower than 0.01 ppm with an accuracy of 5 ppb.

The alarm thresholds can be adjusted depending on the type of oil

From 0.5 mg/m<sup>3</sup> (0.1 mg for some oils)

The VH 350 can be used

- VOC control
- Oil vapors control
- Partially able to oil mist.

This product is delivered with a 3 meter heated sample line

A color touch screen allows an ergonomic parameterize of variables

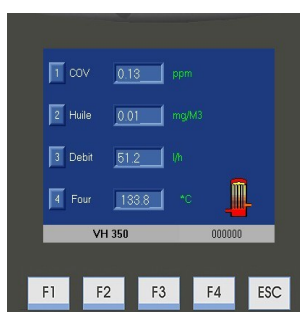
Traceability is stored on an 2 GO SD card



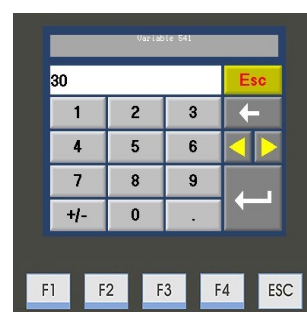
### FEATURES

- ◆ Continuous measurement
- ◆ Permanent indication of the measures on color screen
- ◆ Adjustable alarm threshold
- ◆ Calibration of sensors from the display screen
- ◆ Continuously flow control in cells
- ◆ Watchdog of all defects
- ◆ Traceability of measurements on SD card
- ◆ Trendline peak and on-screen
- ◆ Simple and easy
- ◆ Fix costs reduced
- ◆ Specific program on request
- ◆ Remote monitoring software free
- ◆ DDE and OPC linked provided
- ◆ Com port preconfigured for serial printer and Modbus driver
- ◆ Line drawn at 50 ° C regulated
- ◆ Optional printer for printing:  
Stamped with information:
  - User
  - Lot Number

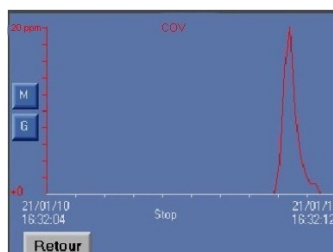
### Benefits



Ecran utilisateur



Clavier ergonomique



Courbe et historique

Date	heure	ppm	mg/m3	DEBIT (l/h)	Temp (°C)	Alarme
21/01/10	18:45	0.02	0.02	6000	18	
21/01/10	18:46	0.02	0.02	6000	18	
21/01/10	18:48	0.02	0.02	6000	18	
21/01/10	18:50	0.02	0.02	6000	18	
21/01/10	18:52	0.02	0.02	6000	18	
21/01/10	18:54	0.02	0.02	6000	18	
21/01/10	18:56	0.02	0.02	6000	18	
21/01/10	18:58	0.02	0.02	6000	18	
21/01/10	19:00	0.02	0.02	6000	18	
21/01/10	19:02	0.02	0.02	6000	18	
21/01/10	19:04	0.02	0.02	6000	18	
21/01/10	19:06	0.02	0.02	6000	18	
21/01/10	19:08	0.02	0.02	6000	18	
21/01/10	19:10	0.02	0.02	6000	18	
21/01/10	19:12	0.02	0.02	6000	18	
21/01/10	19:14	0.02	0.02	6000	18	
21/01/10	19:16	0.02	0.02	6000	18	
21/01/10	19:18	0.02	0.02	6000	18	
21/01/10	19:20	0.02	0.02	6000	18	
21/01/10	19:22	0.02	0.02	6000	18	
21/01/10	19:24	0.02	0.02	6000	18	
21/01/10	19:26	0.02	0.02	6000	18	
21/01/10	19:28	0.02	0.02	6000	18	
21/01/10	19:30	0.02	0.02	6000	18	
21/01/10	19:32	0.02	0.02	6000	18	
21/01/10	19:34	0.02	0.02	6000	18	
21/01/10	19:36	0.02	0.02	6000	18	
21/01/10	19:38	0.02	0.02	6000	18	
21/01/10	19:40	0.02	0.02	6000	18	
21/01/10	19:42	0.02	0.02	6000	18	
21/01/10	19:44	0.02	0.02	6000	18	
21/01/10	19:46	0.02	0.02	6000	18	
21/01/10	19:48	0.02	0.02	6000	18	
21/01/10	19:50	0.02	0.02	6000	18	
21/01/10	19:52	0.02	0.02	6000	18	
21/01/10	19:54	0.02	0.02	6000	18	
21/01/10	19:56	0.02	0.02	6000	18	
21/01/10	19:58	0.02	0.02	6000	18	
21/01/10	20:00	0.02	0.02	6000	18	
21/01/10	20:02	0.02	0.02	6000	18	
21/01/10	20:04	0.02	0.02	6000	18	
21/01/10	20:06	0.02	0.02	6000	18	
21/01/10	20:08	0.02	0.02	6000	18	
21/01/10	20:10	0.02	0.02	6000	18	
21/01/10	20:12	0.02	0.02	6000	18	
21/01/10	20:14	0.02	0.02	6000	18	
21/01/10	20:16	0.02	0.02	6000	18	
21/01/10	20:18	0.02	0.02	6000	18	
21/01/10	20:20	0.02	0.02	6000	18	
21/01/10	20:22	0.02	0.02	6000	18	
21/01/10	20:24	0.02	0.02	6000	18	
21/01/10	20:26	0.02	0.02	6000	18	
21/01/10	20:28	0.02	0.02	6000	18	
21/01/10	20:30	0.02	0.02	6000	18	
21/01/10	20:32	0.02	0.02	6000	18	
21/01/10	20:34	0.02	0.02	6000	18	
21/01/10	20:36	0.02	0.02	6000	18	
21/01/10	20:38	0.02	0.02	6000	18	
21/01/10	20:40	0.02	0.02	6000	18	
21/01/10	20:42	0.02	0.02	6000	18	
21/01/10	20:44	0.02	0.02	6000	18	
21/01/10	20:46	0.02	0.02	6000	18	
21/01/10	20:48	0.02	0.02	6000	18	
21/01/10	20:50	0.02	0.02	6000	18	
21/01/10	20:52	0.02	0.02	6000	18	
21/01/10	20:54	0.02	0.02	6000	18	
21/01/10	20:56	0.02	0.02	6000	18	
21/01/10	20:58	0.02	0.02	6000	18	
21/01/10	21:00	0.02	0.02	6000	18	

Traçabilité XLS

# CARACTERISTIQUES

## MECHANICAL

Size L x H x P	400 X 350 X 190 mm
weight	5 KG
Protection	IP 55

## Electriques

Power supply	220V $\pm$ 15%
Consommation	1,6 A
Optionnal batteries	NO

## Pneumatic

Inlet pressure	1à 10 bar
Flow cells	0.2 L/ mn
Optionnal pump	YES

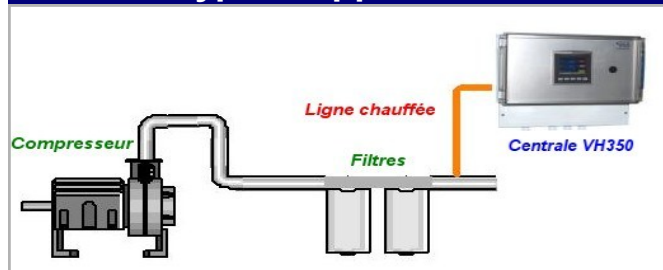
## Terms of use

Storage temperature	-20°C à + 50°C
Using temperature	+ 0 à 50°C
Humidity	0 à 90%

## Sensor

Technology	PID
Range	0 à 20 ppm
Response time	15 secondes
Minimum détection	0,01 ppm
Accurancy	1%
Linearity	1%
Repitivity	1%
Warm up	2 minutes
Evaporator temperature	140 °C

## Typical application



**Votre distributeur régional**

**Nos coordonnées**

ASCO INSTRUMENTS  
2 place des 10 Toises  
78 117 Châteaufort  
Tel : 01 39 56 76 40  
Fax : 01 39 56 76 49  
[www.asco-instruments.fr](http://www.asco-instruments.fr)  
[contact@asco-instruments.com](mailto:contact@asco-instruments.com)